

# WARRAWONG COMMUNITY HEALTH CENTRE

PORT KEMBLA HOSPITAL | DETAILED DESIGN VE AMENDMENTS

LANDSCAPE ARCHITECTURE REPORT | APRIL 2024



*We acknowledge Gadi Country, the Cultural Landscape that we are working upon, and the Dharawal people as the traditional owners of the Country where the Port Kembla Hospital project is located.*

*We acknowledge all First Nations people and their ongoing connection to culture, lands and waters and their valuable contribution to the community. We recognise, acknowledge, and extend our respect to many others who have custodial obligations for Country and have been connected to Dharawal for many generations, including their Elders past, present and emerging.*



# CONTENT

Contextual Understanding

4

*Warrawong Wider Context*  
*Town Centre Context*  
*Existing Site Photos*

Cultural Narratives

8

*Connecting with Country, Caring for Country*  
*Cultural Mapping*  
*Design Jam Outcomes - Summary of Themes & Thoughts*

Landscape Concept

12

*Principles*  
*Landscape Narrative and Materiality*  
*Warrawong’s Key ‘Natural’ Surrounds*

Landscape Design

18

*Landscape Master Plan*  
*Tree Strategy*  
*Key Areas*

Materials and Planting Palette

40

*Materials Palette*  
*Planting Palette*



CONTEXTUAL UNDERSTANDING



CONTEXTUAL UNDERSTANDING

Warrawong Wider Context





CONTEXTUAL UNDERSTANDING

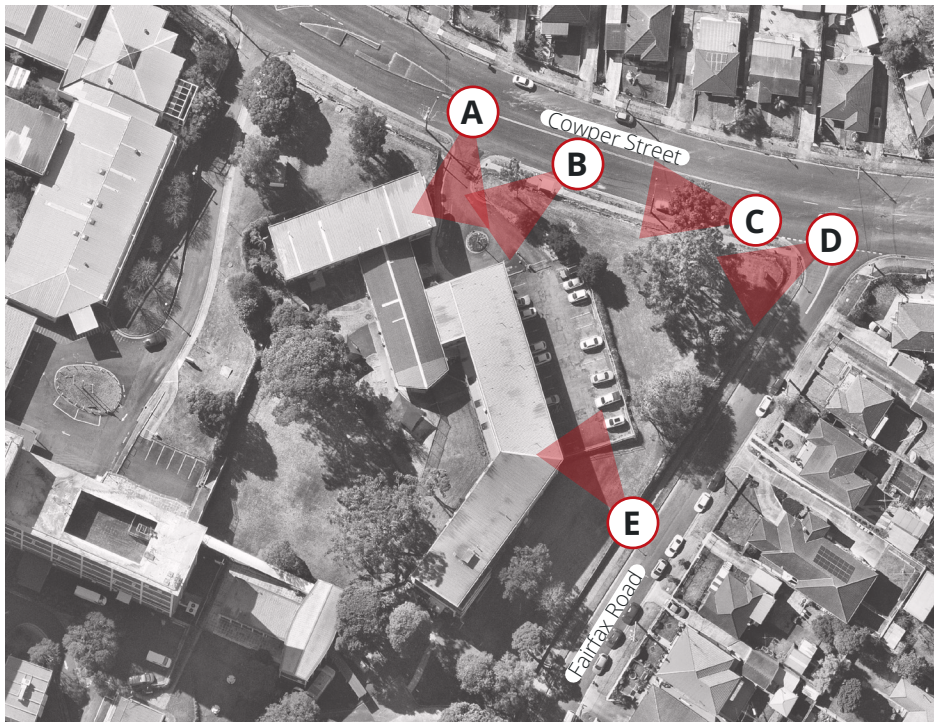
Town Centre Context





CONTEXTUAL UNDERSTANDING

Existing Site Photos



Driveway from Cowper Street to existing buildings



View from Cowper Street to existing buildings



Retaining wall and landscape on Cowper Street



Corner of Cowper Street and Fairfax Road



Retaining wall and landscape on Fairfax Road





CULTURAL NARRATIVES

CONNECTING WITH COUNTRY, CARING FOR COUNTRY

Design Narratives

“For much of the past two hundred years, there has been a dis-connection from Dharawal Country. This Vision and Strategy seeks to reconnect with Country and embed it in all aspects of the process.”

- Yerrabingin



Shapes of our Land and Sea

***Merringong, Oola-boola-wo and the Five Islands***

Dharawal Country around Wollongong has a unique form with Merringong (the escarpment) standing tall behind the long coastline of beaches and headlands. Dharawal people have lived here for thousands of years. Food and medicine can be found on Merringong alongside the creeks, lakes and ocean.

The landforms we can see today – such as the Five Islands off the coast at Port Kembla - were created long ago. Father Oola-boola-wo, the west wind, blew five of his daughters out to sea on pieces of rock, creating the Five Islands. His sixth daughter, Geera, was left alone and became Mount Keira.



Special Connections

***Burri Burri***

Dharawal people have a special connection to Burri Burri (humpback whale). Burri Burri is connected to the Gynea Lily, as when it flowers is when the whales are passing along the coast heading north to give birth.

The story of Burri Burri, or Wondanger, the whale tells of how Dharawal people came to this area and why the Burri Burri still makes his journey along the coast spurting water from his head to this day. The story includes other animals – Goon-na-ghan the starfish, Kuririlwa the koala and Gooradawaak the brolga - and places across the landscape. It reminds us of the connection between all living things.



A Guiding Place

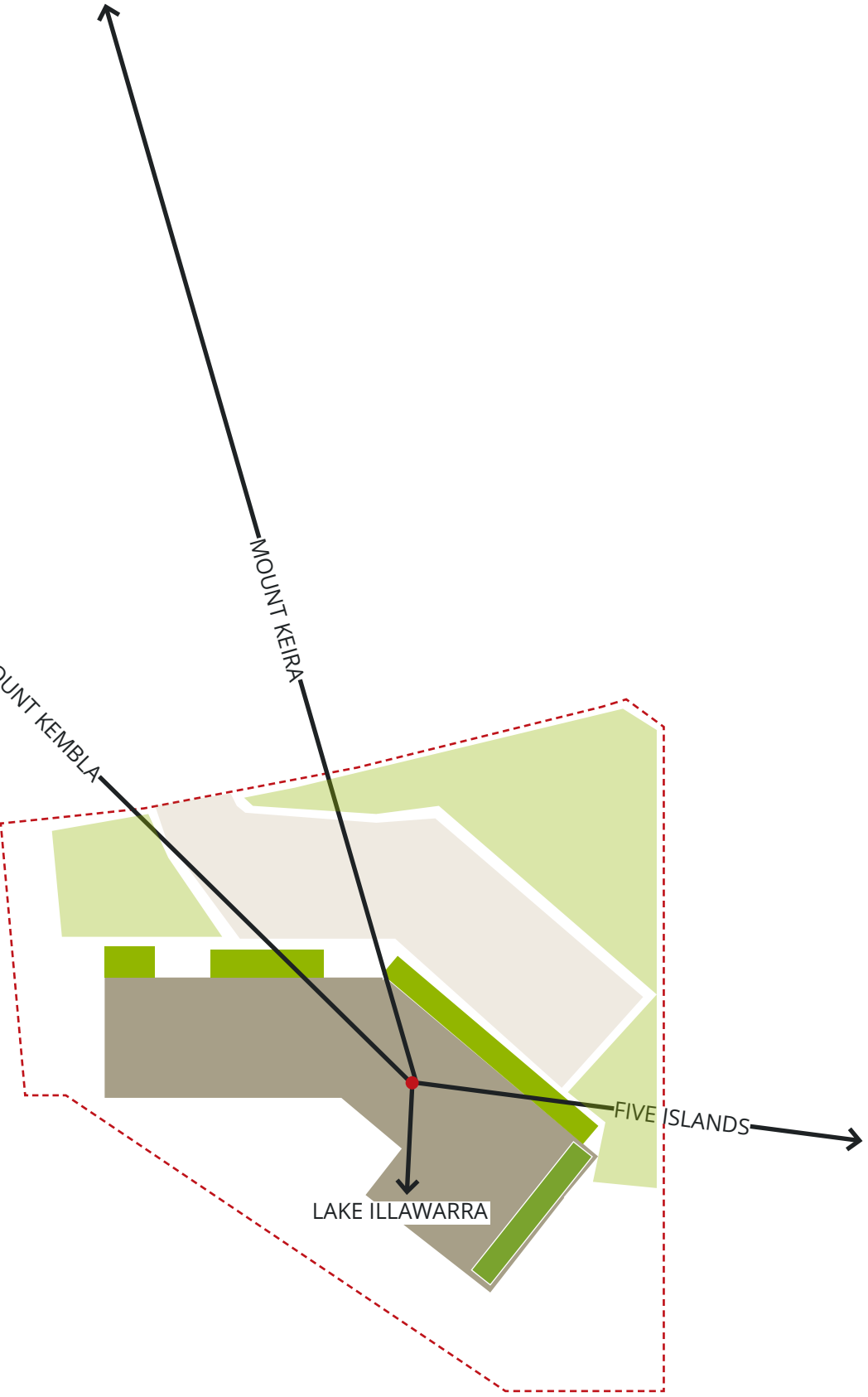
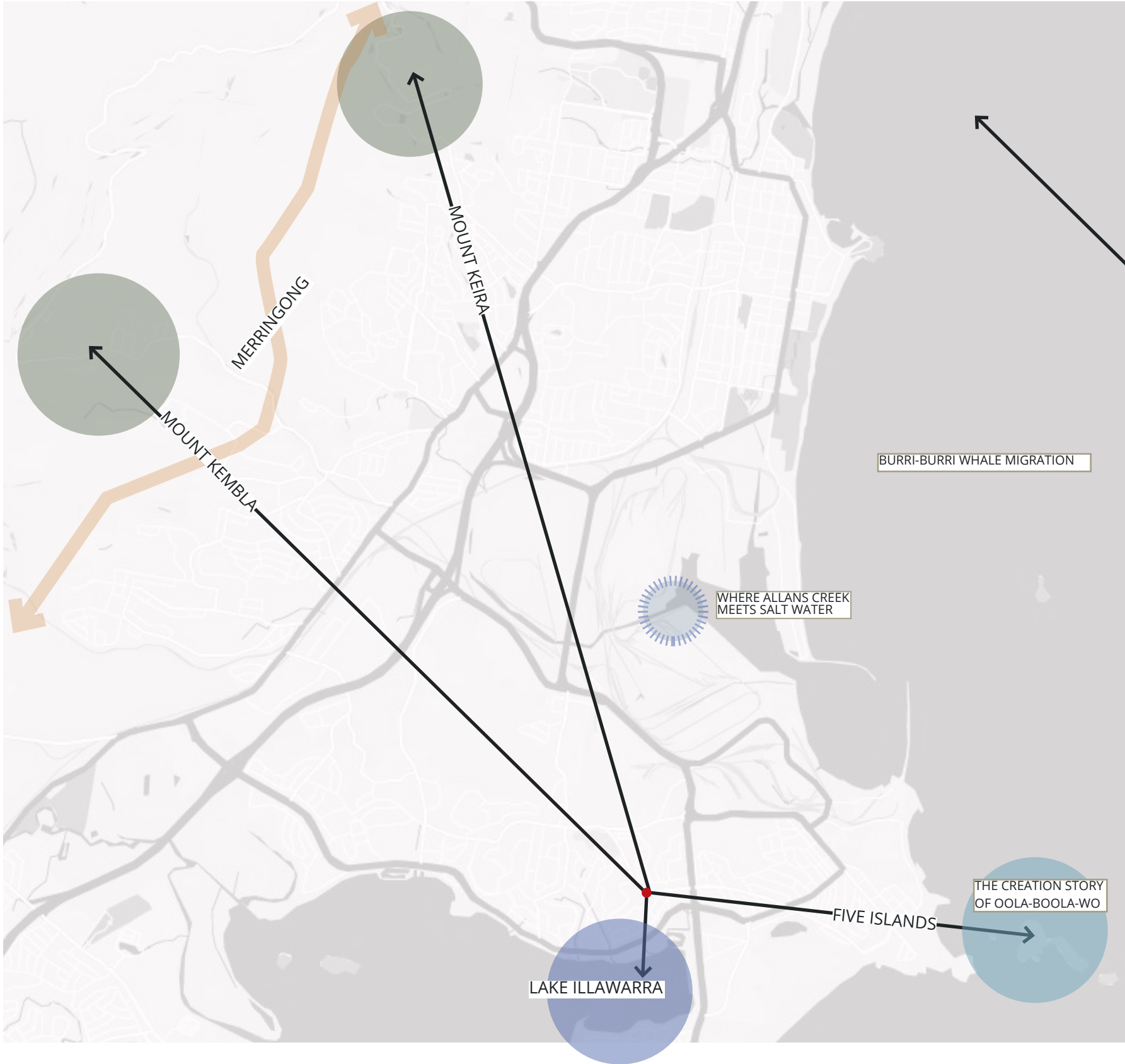
***Djeera and Jumbulla***

Djerra and Jumbulla are important places for Dharawal people. They are location points, to guide people on Country, and to offer views out across the regions and to the ocean.

The mountains and other hills such as Red Hill/ Hill 60 are connected within this landscape, with American Creek running down from Jumbulla to join Allans Creek, before meeting the ocean at Port Kembla, close the Five Islands, connecting the stories of these places and connecting freshwater to salt water.

CULTURAL NARRATIVES

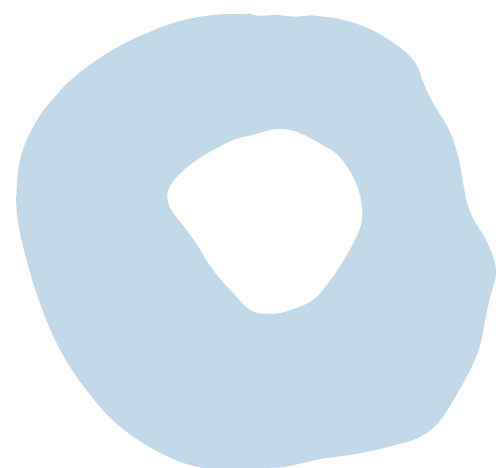
Cultural Mapping





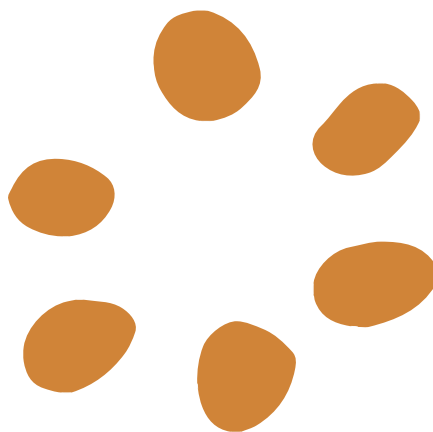
# CULTURAL NARRATIVES

Design Jam Outcomes - Summary of Themes and Thoughts



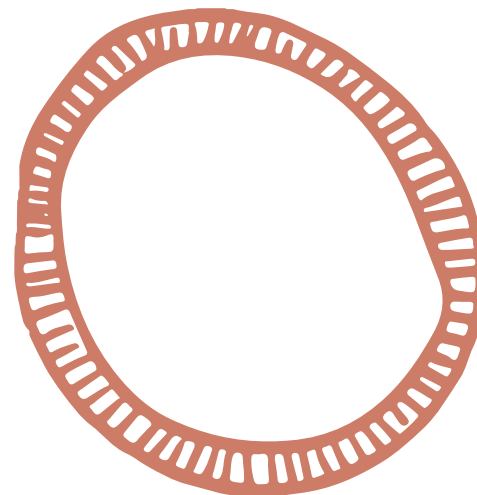
## WATER

- All groups referenced the significance of **water**, discussing the cultural, social, and environmental functions of the element.
- For instance, the landscape can **explore the natural water course on the front corner of the site**, creating dry creek beds to capture and redistribute fresh rain water.
- Connections may be deepened through intuitive pathways, signage, and strategically placed garden beds.
- Designed to contextualize the site within nearby **salt and fresh waterways**, the landscape should harness the slopes and connect **view lines** (to salt water Country) and acknowledge Lake Illawarra.
- Groups tasked with exploring narratives focused on how water flows through the site, discussing how this natural flow should consider upper and lower catchments to guide the landscape design. The **history of fishing** and the freshwater / saltwater connections were also highlighted and may be incorporated within different elements of the site.



## STORIES

- First Nations stories are woven within Warrawong and the Illawarra. **Meaning windy hill** / wind on hill, Warrawong is inherently guided by Country.
- Understanding the multicultural nature of the Warrawong community, with a range of dual learning opportunities within the landscape
- Stories (e.g. Burri Burri, 5 islands etc.) to create moments of **meaningful interaction**.
- Establish a **series of landscape pocket nodes** that service different users. For instance, create a small nodes for personal reflection, as well as, larger seated areas designed for conversation and collaboration (think Yarning circle).
- Nodes present further opportunities for activation and could **facilitate partnerships and collaborations with local First Nations community groups** or other health-related groups.
- Significance of the birthing tree / fig tree and how this story may be communicated to create a safe and welcoming space for patients.



## ECOLOGIES

- Celebrate **local species** through planting scheme, considering how different textures, smells, and sights will contribute to the user experience. Building on this, ensure pathways interact with the landscape to encourage and **guide people seamlessly across site**.
- Groups tasked with exploring narratives highlighted a range of opportunities to develop the landscape ecologies of the site, touching on different species and environments (estuary, reeds, nurseries, riparian zones, lemon scented gum, melaleucas etc.).
- How the landscape could be designed in a way that **speaks to the Four Islands**. Expressed as four garden beds, with the building functioning as the fifth (Big Island), the site could showcase the local story and create a welcoming and Country-centered place.



LANDSCAPE CONCEPT



# LANDSCAPE CONCEPT

## Principles



### COMMUNITY ORIENTATED

The landscape offerings must cater and appeal to the local community, it should feel unique to this community and comfortable for all users.



### LANDSCAPE AS HEALING

A landscape that uses local plants, materials and motifs to soothe people and positively impact their experience on site. Also, landscapes that can engage people in education and support building functions such as physical therapy and linguistic development.



### PLACE OF SAFETY AND RESPITE

An inclusive and safe design which provides opportunity for people to gather in small and larger groups. Creating a safe, happy and social community.

### *Landscape Narrative and Materiality*

### *Landscape Narrative and Materiality*



## THE ISLANDS/COAST





LANDSCAPE CONCEPT

Warrawong's Key 'Natural' Surrounds

The Five Islands Nature Reserve

Five Islands Nature Reserve was created in June 1960. The islands include: Flinders Islet, Bass Islet, Martin Islet, Big Island and Rocky Islet.

The islands are ecologically rich, providing habitat and breeding sites for the threatened sooty oyster catcher, breeding sites for the wedge-tailed shearwater and short-tailed shearwater and habitat for the whitebellied sea-eagle.

Five Islands Nature Reserve is also greatly important to the Aboriginal community due to continuing cultural associations and past occupation of the area.



Key Elements

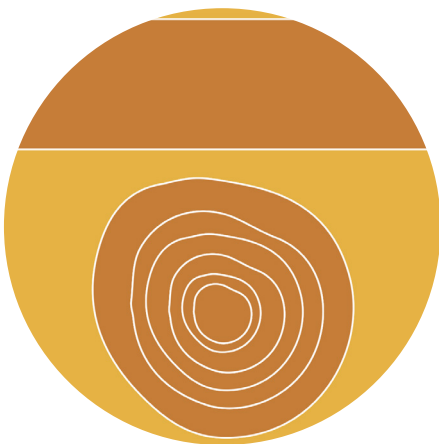
Wind



Salt Water



Sun



Key Kin



Hump Back Whales



Little Penguins



Sting Rays



New Zealand Fur Seals

Key Vegetation



*Carpobrotus glaucescens*



*Dichondra repens*



*Imperata cylindrica*



*Hibbertia scandens*



*Atriplex cinerea*



LANDSCAPE CONCEPT

Warrawong’s Key ‘Natural’ Surrounds

**Lake Illawarra**

The lake is a highly accessible coastal offering with parks and jetties along the foreshore to water-based activities like boating, fishing and sailing.

The lake hosts key vegetation communities such as saltmarsh and swamp oak floodplain forest.

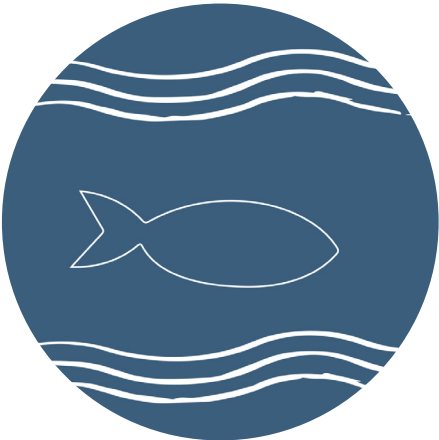
Lake Illawarra contains areas of Aboriginal cultural significance from a long history of use of lake and its surrounds.

Key Elements

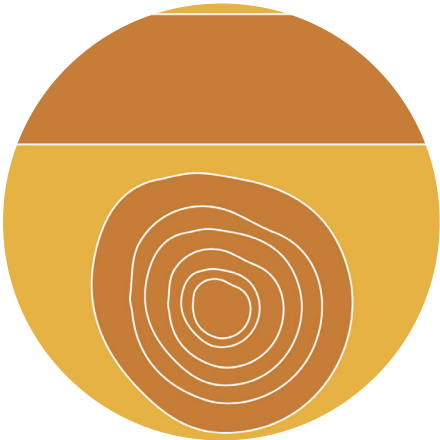
Refuge



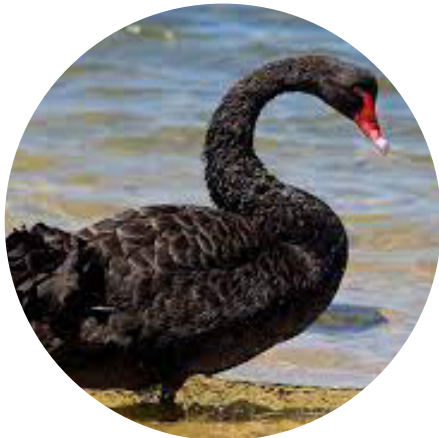
Salt Water



Sun



Key Kin



Black Swans



White Bellied Sea Eagles



Flatheads



Crabs

Key Vegetation



*Avicennia marina*



*Casuarina equisetifolia*



*Sarcocornia quinqueflora*



*Lomandra longifolia*



LANDSCAPE CONCEPT

Warrawong’s Key ‘Natural’ Surrounds

Merringong / The Illawarra Escarpment

Merringong has great cultural significance for local Indigenous people, Mount Kembla and Mount Keir feature in a number of creation stories. The conversation area also contains traditional routes of travel between the coastal plain and the plateau.

Merringong contains the most extensive area of rainforest in the Sydney basin and forms a crucial corridor between Royal National Park and the South Coast. There are currently 12 threatened animal species in the area.



Key Vegetation



Elaeocarpus reticulatus



Banksia serrata



Asplenium australasicum



Doryanthes excelsa



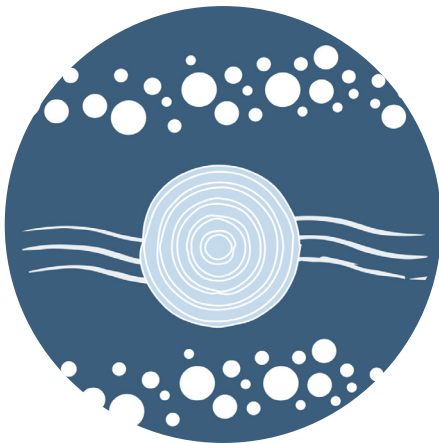
Actinotus helianthi

Key Elements

Mountainous



Fresh Water



Views



Key Kin



Spotted Quolls



Eastern dwarf tree frogs



Australian water dragon



Black cockatoos





LANDSCAPE DESIGN



# LANDSCAPE DESIGN

## Landscape Master Plan

### LEGEND

- ① Landscape Zone / Escarpment Way
- ② Main Entry
- ③ Carpark
- ④ Drop off
- ⑤ Client Breakout
- ⑥ Adult and Child Waiting Courtyard
- ⑦ Group Room Courtyard
- ⑧ Child Therapy Courtyard
- ⑨ Staff Breakout
- ⑩ Staff Breakout - Terrace
- ⑪ Bioretention Basin






LANDSCAPE DESIGN

Tree Strategy

LEGEND

-  Trees to be retained
-  Trees to be removed
-  Proposed trees

Site area:  
6,633.8m<sup>2</sup>

Existing Total Tree Canopy Coverage:  
920m<sup>2</sup> (13.8% of site area)

Proposed Total Tree Canopy Coverage:  
1,686m<sup>2</sup> (25.4% of site area)

\*Excludes canopy outside of extent of works.



Existing and proposed tree canopy



# LANDSCAPE DESIGN

## Child and Family Therapy Courtyard

This courtyard is a therapeutic external space which will support the therapeutic needs of children in a safe and engaging setting. The design language, materiality and plant palette of this courtyard will reflect the uniqueness of the Illawarra escarpment ecology. There is opportunity for community engagement to develop interpretative elements in the paving and mural wall.

### LEGEND

- ① Planting that reflects the vegetation of the Illawarra escarpment
- ② Informal seating element / raised platform
- ③ Main pathway
- ④ Balance challenges
- ⑤ Target throwing wall / mural
- ⑥ Softfall paving
- ⑦ Astroturf
- ⑧ Fencing
- ⑨ Shade Sails
- ⑩ Hammock



Reference Plan



Detailed Plan of Child and Family Therapy Courtyard





Opportunity for integration of art into playful elements



Planting of species endemic to the Illawarra Escarpment



Interpretive elements expressing narratives of non-human kin in rubber softfall surfacing



Patterns expressed in rubber softfall surfacing

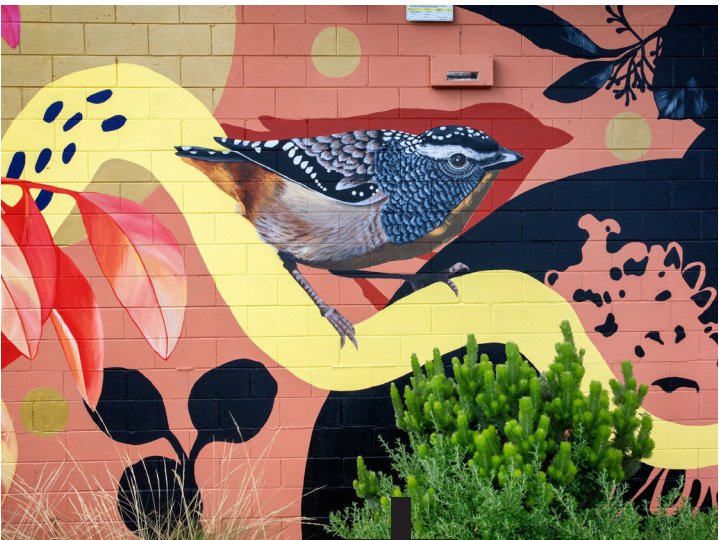
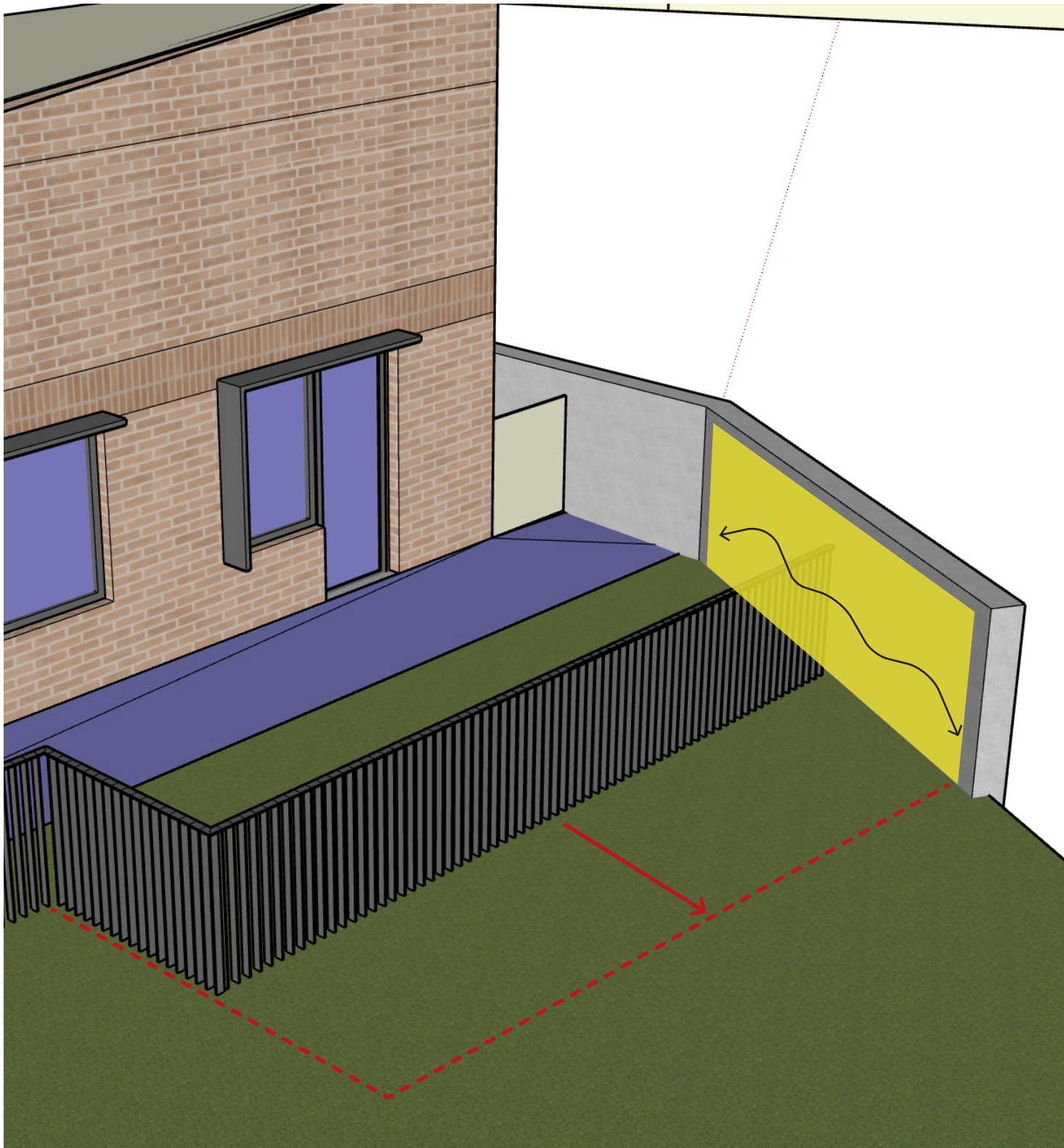


Use of local timber

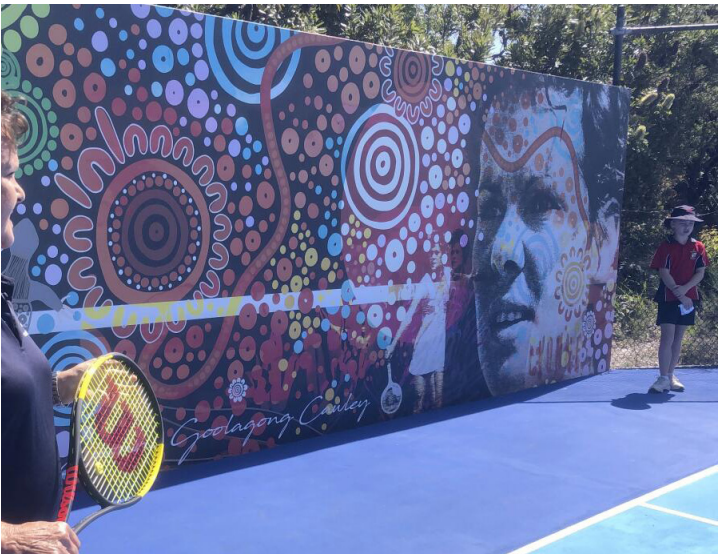


LANDSCAPE DESIGN

Child and Family Therapy Courtyard



Wall to combine sports functions and artwork



Tennis hit up wall, Noosa Tennis Club Artwork collaboration between Gubbi Gubbi artist Maggie-Jean Douglas and portrait artist Paink

The courtyard wall provides an opportunity to provide a playful surface with targets and holes for beanbags and balls to be thrown at. A mural can be integrated with the sports targets, providing narrative opportunities expressing planting and non-human kin of the Illawarra Escarpment.



# LANDSCAPE DESIGN

## Child and Family Wait Courtyard + Group Room Courtyard

The child and family wait courtyard should cater to both caregivers and children, by providing comfortable furniture, a pleasant outlook and play elements. The group room courtyard should facilitate small group break out spaces, through the provision of appropriate furniture and a pleasant outlook.

The design language, materiality and plant palette of this area will reflect the uniqueness of Illawarra Escarpment ecology. There is opportunity for community engagement to develop interpretative elements in the paving and furniture elements.

### LEGEND

- ① Peripheral planting that reflects the Illawarra escarpment
- ② Seating bench / platform
- ③ Communal table
- ④ Learning circle
- ⑤ Softfall paving
- ⑥ Net and log play element



Reference Plan



Detailed Plan of Child and Family Wait Courtyard & Group Room Courtyard



LANDSCAPE DESIGN

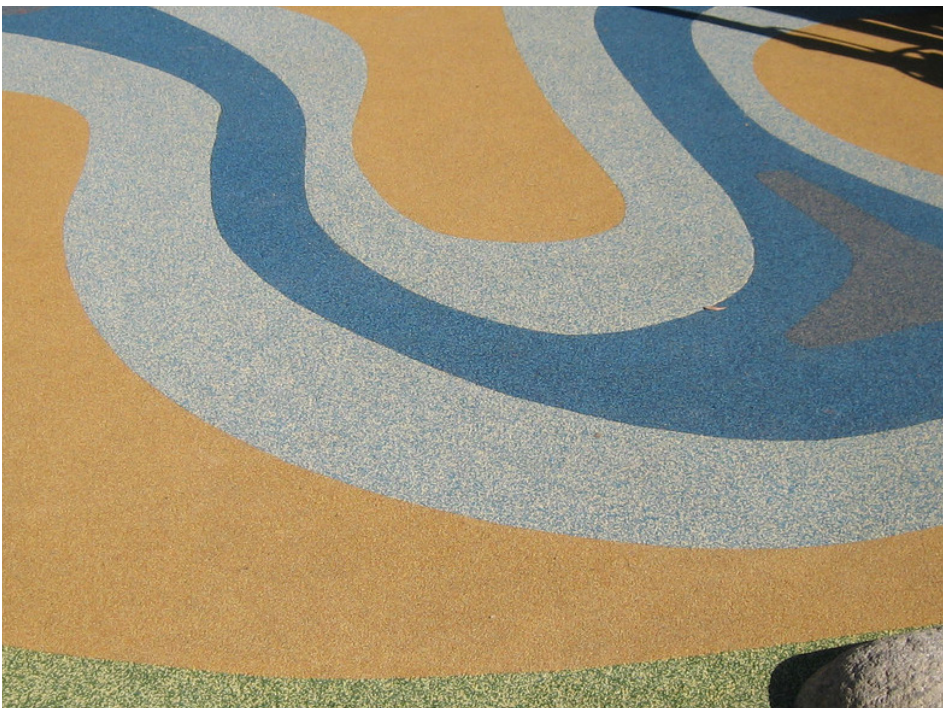
Child and Family Wait Courtyard + Group Room Courtyard



Planting to include flowering species to create seasonal interest



Use of timber furniture



Express patterns through rubber softfall surfacing



Sculptural timber elements



Use of local stone



Provide a seating and furniture options



LANDSCAPE DESIGN

Adult Wait Courtyard + Large Landscape Area + Adult Courtyard

The adult wait courtyard and landscape area will act as a lush buffer landscape that will provide a unique outlook from the centre. The main path will lead people between the main entries of the centre. Planting to this area will provide shade to the centre and carpark.

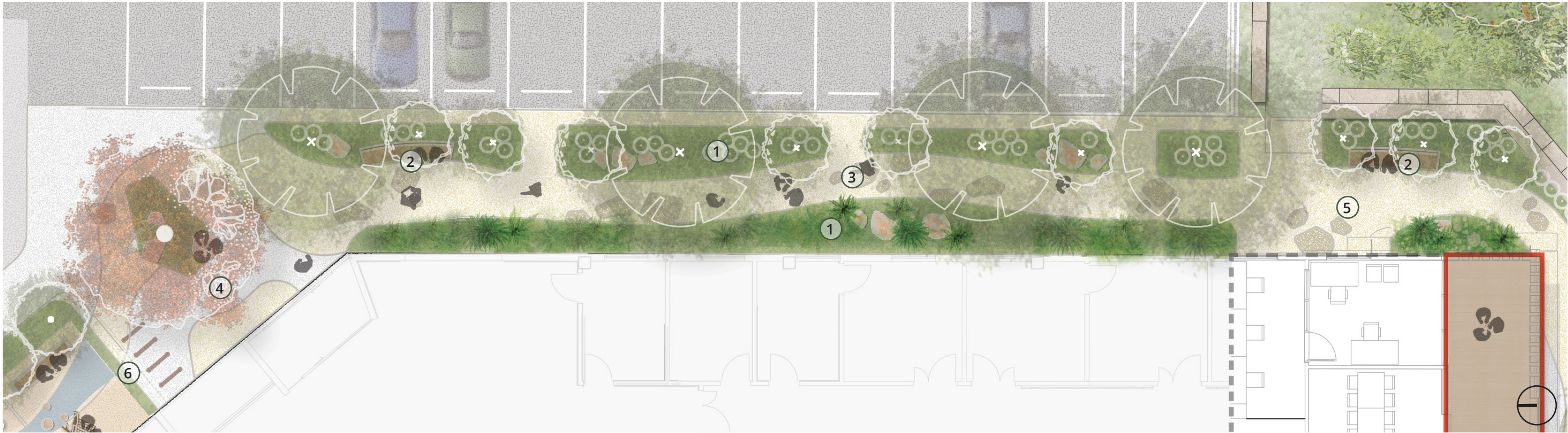
The design language, materiality and plant palette of this area will reflect the uniqueness of the Illawarra Escarpment ecology.

LEGEND

- 1 Peripheral planting that reflects the Illawarra escarpment
- 2 Informal seating element (to wait area)
- 3 Main pathway (interpretive paving feature)
- 4 Main Entry (with Flame Tree)
- 5 Adult Courtyard
- 6 Bike Racks



Reference Plan



Detailed Plan of Adult Wait Courtyard & Adult Courtyard



LANDSCAPE DESIGN

Adult Wait Courtyard + Large Landscape Area + Adult Courtyard



Tree species endemic to the Illawarra escarpment



Opportunity for interpretation in the ground plane



Integrate furniture into garden bed edging



Range of seating options



Textural interest in paving with exposed aggregates



Informal seating opportunities



# LANDSCAPE DESIGN

## Carpark

The carpark will be a convenient drop off and parking point on site. The design of the carpark will aim to limit heat absorption and radiation, while improving the treatment of water on site.

The design language, materiality and plant palette of this area will reflect the uniqueness of the Lake Illawarra ecology.

### LEGEND

- ① Planting that reflects the vegetation of Lake Illawarra
- ② Gabion wall with climbing planting to base
- ③ Permeable paving
- ④ Trees to carpark edge for shade
- ⑤ Drop off area



Reference Plan



Detailed Plan of Child and Family Wait Courtyard & Group Room Courtyard



LANDSCAPE DESIGN

Carpark



Permeable paving to drop off zone



Gabion walls with integrated planting



Gabion walls with integrated planting



Maximise trees and greening surrounding car park



Create a civic feel to the spaces around the car park and drop off area



Terraced gabion walls



# LANDSCAPE DESIGN

## Client Breakout

The client breakout area is intended to act as an extension of the drop off area while providing an immersive, removed landscape area for client reflection.

The design language, materiality and plant palette of this area will reflect the uniqueness of Lake Illawarra.

### LEGEND

- ① Planting that reflects the vegetation of Lake Illawarra
- ② Informal seating elements
- ③ Seating bench and small tables
- ④ Secondary pathway



Reference Plan



Detailed Plan of Client Breakout



LANDSCAPE DESIGN

*Client Breakout*



*Endemic planting*



*Endemic planting including trees*



*Meandering secondary path through planting*



*Use of stone as informal seating and to add textural interest*



*Informal seating set within planting*



*Seating nodes with a mix of seating types*



### Bioretention Basin

## LEGEND

- 

### Reference Plan



### Detailed Plan of Bioretention Basin



## LANDSCAPE DESIGN

### *Bioretention Basin*



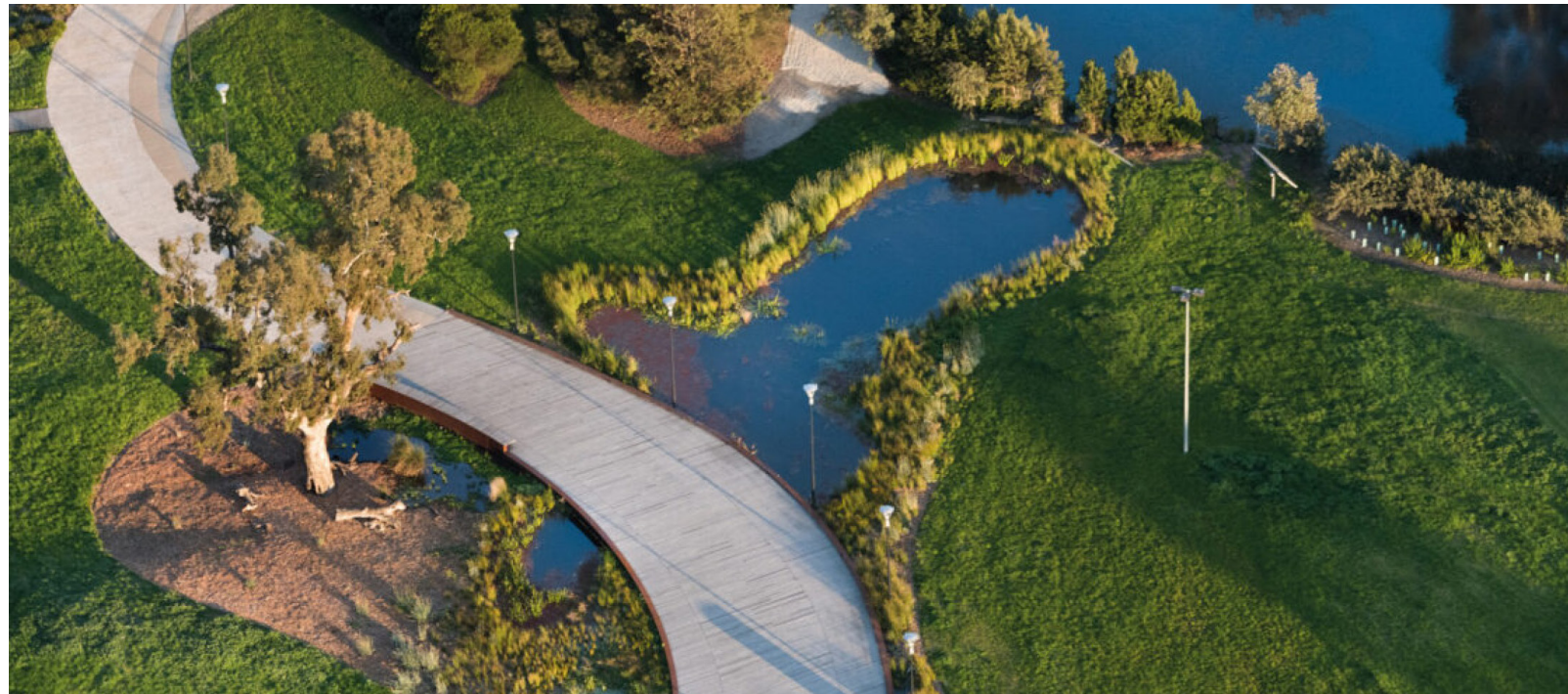
*Using native planting to treat and filter runoff water*



*Creating a changing landscape that evolves with different seasons*



*Opportunity to integrate art into the basin*



*Using natural systems to treat runoff to enhance the surrounding environment*



*Inviting people to play, interact and be immersed in the landscape*





**MATERIALS & PLANTING PALETTE**

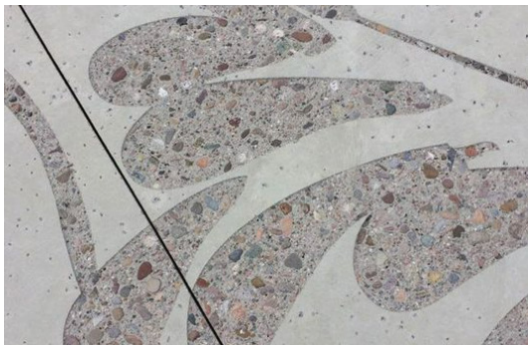


MATERIALS PALETTE

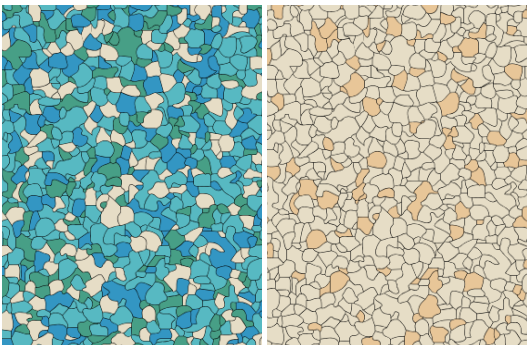
Paving



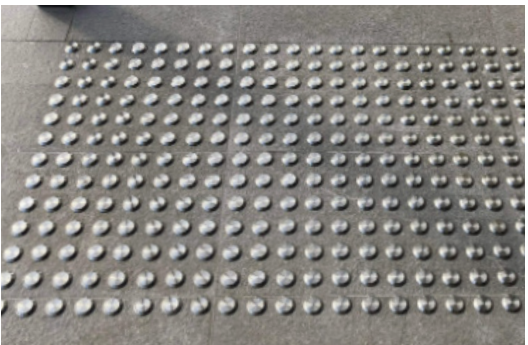
*Insitu concrete with custom aggregate mix*



*Mixing concrete finishes to create patterns*



*Custom mix softfall*



*Tactile indicators*



*Decomposed granite*



*Artificial turf*



*River gravel*



*Stepping stones*

Walls



*Custom mix gabion retaining wall (re-use onsite materials)*



MATERIALS PALETTE

Landscape Elements



Stone boulders



Timber steppers



Trails of timber steppers, logs and uprights



Hammocks

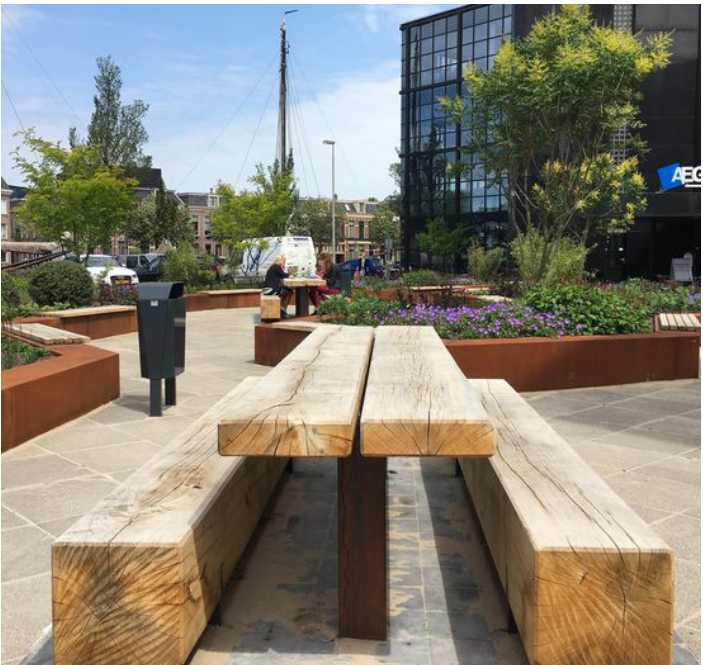
Furniture



Concrete seating walls and individual seats



Sandstone seats



Timber communal seating



Informal seating using timber and stone



PLANTING PALETTE

Trees



Acmena smithii



Brachychiton acerifolius



Banksia serrata



Corymbia maculata



Elaeocarpus reticulatus



Melaleuca quinquenervia



Melaleuca styphelioides



Tristaniopsis laurina



PLANTING PALETTE

Shrubs



Anigozanthos 'Big Red'



Correa alba



Dodonaea viscosa



Hakea dactyloides



Leptospermum polygalifolium



Leucopogon parviflorus



Olearia tomentosa



Prostanthera incisa



Rhagodia candolleana



Telopea speciosissima



Westringia fruticosa



PLANTING PALETTE

Ferns



Asplenium australasicum



Blechnum cartilagineum

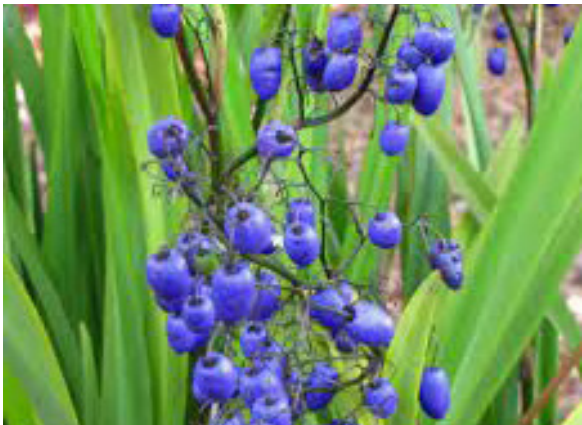


Dicksonia antarctica

Matrix 1



Carpobrotus glaucescens



Dianella revoluta



Dichelachne micrantha



Lomandra filiformis

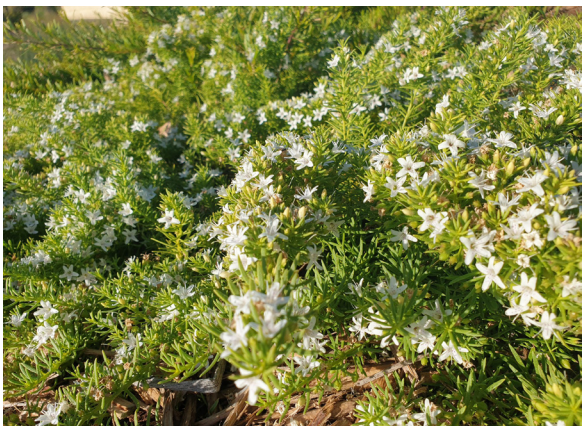
Matrix 2



Lomandra longifolia



Microlaena stipoides



Myoporum parvifolium



Poa sieberiana



Matrix 3



Dianella revoluta



Dichondra repens



Lomandra longifolia



Viola hederacea

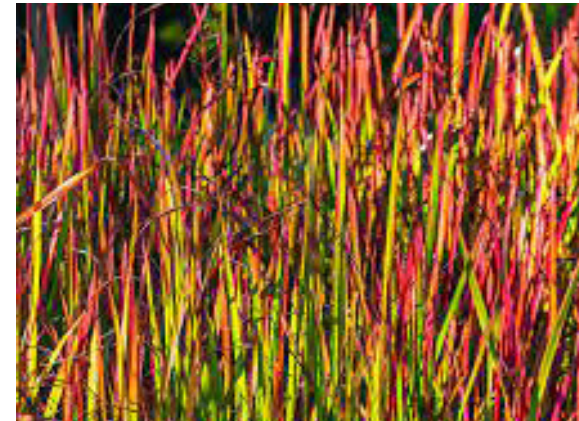
Matrix 4



Carex appressa



Ficinia nodosa



Imperata cylindrica



Lepidosperma laterale

Matrix 5



Hibbertia scandens



Pandorea pandoreana





YERRABINGIN